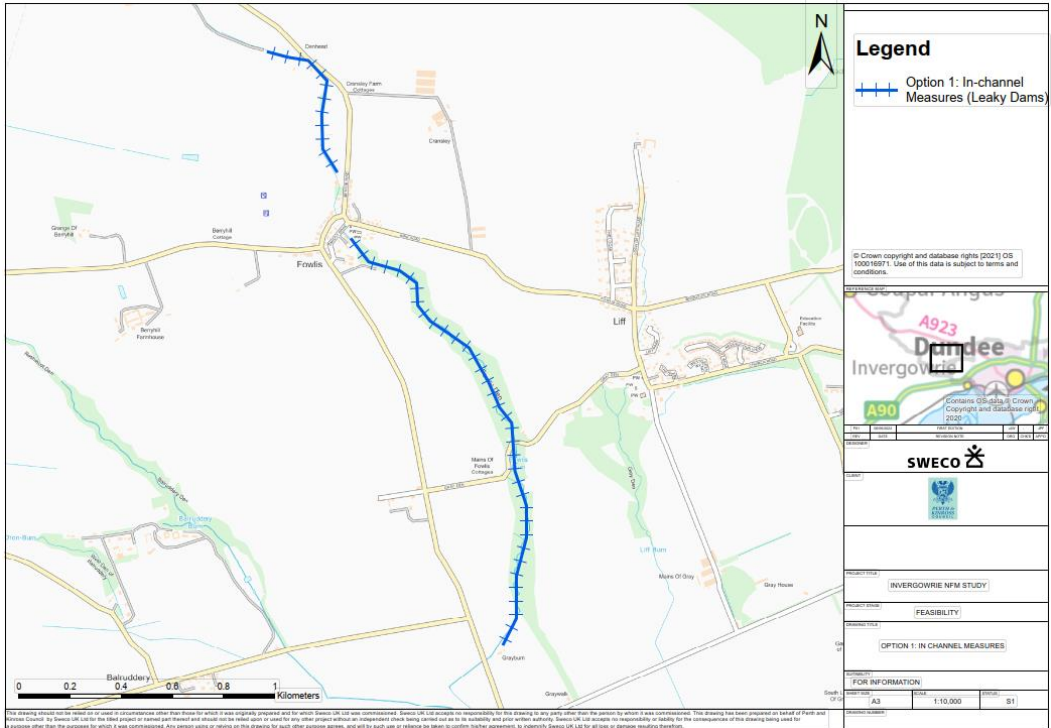
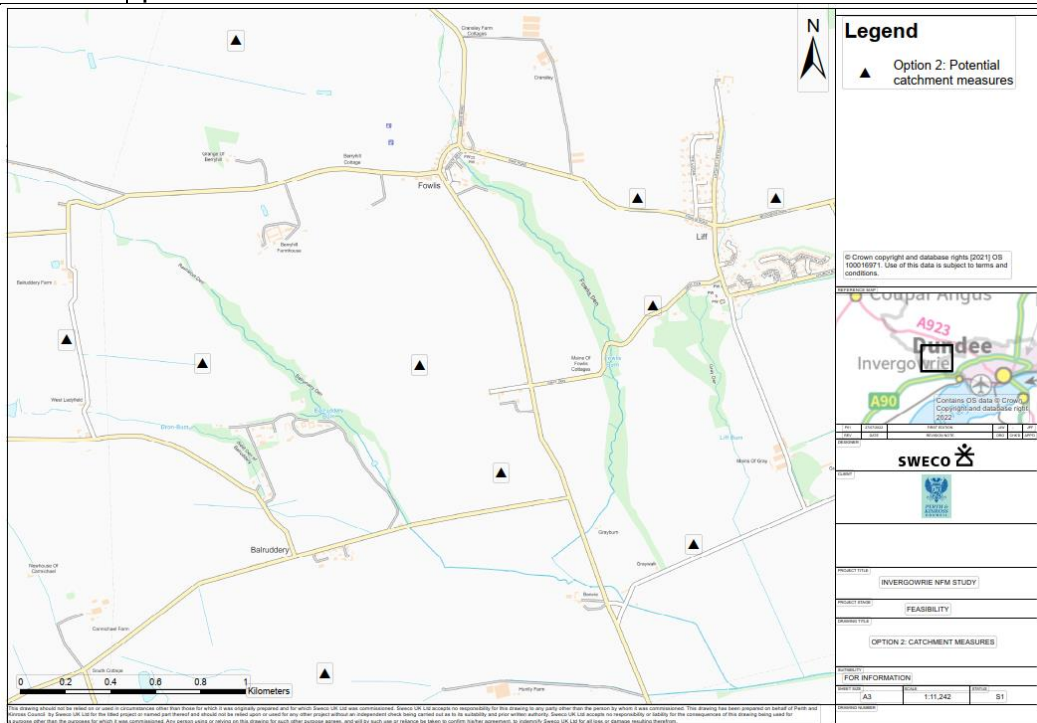


**Appendix 4 - Invergowrie NFM Study – Plans of Potential Options**

<b>Option 1</b>	In channel measures to attenuate flows along the upper Fowls Burn including riparian planting, leaky dams, and woodland management in Fowls Den.
-----------------	--

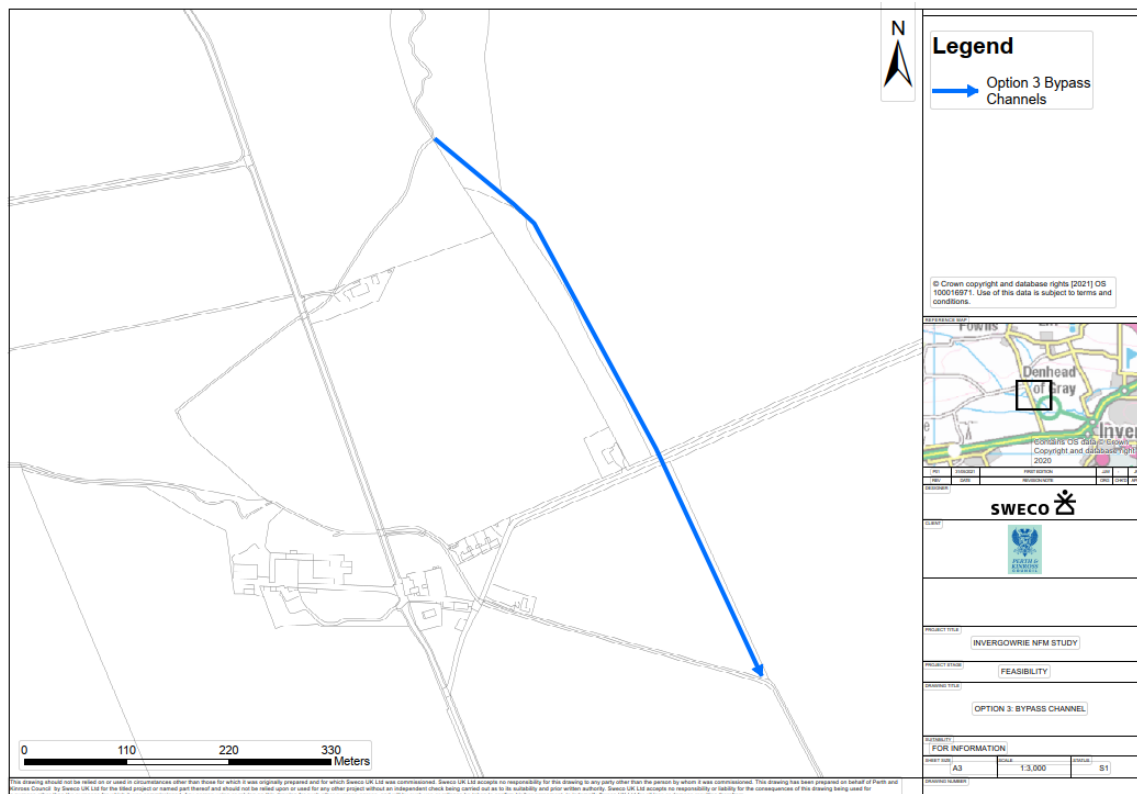
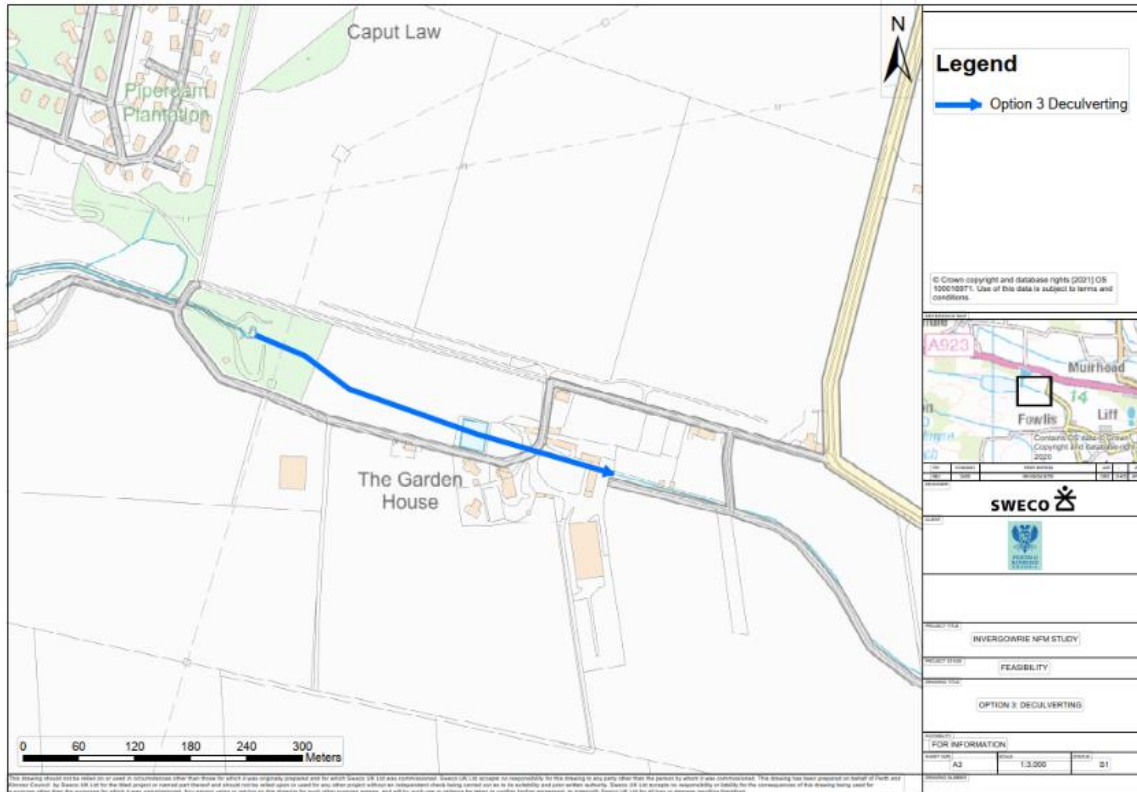


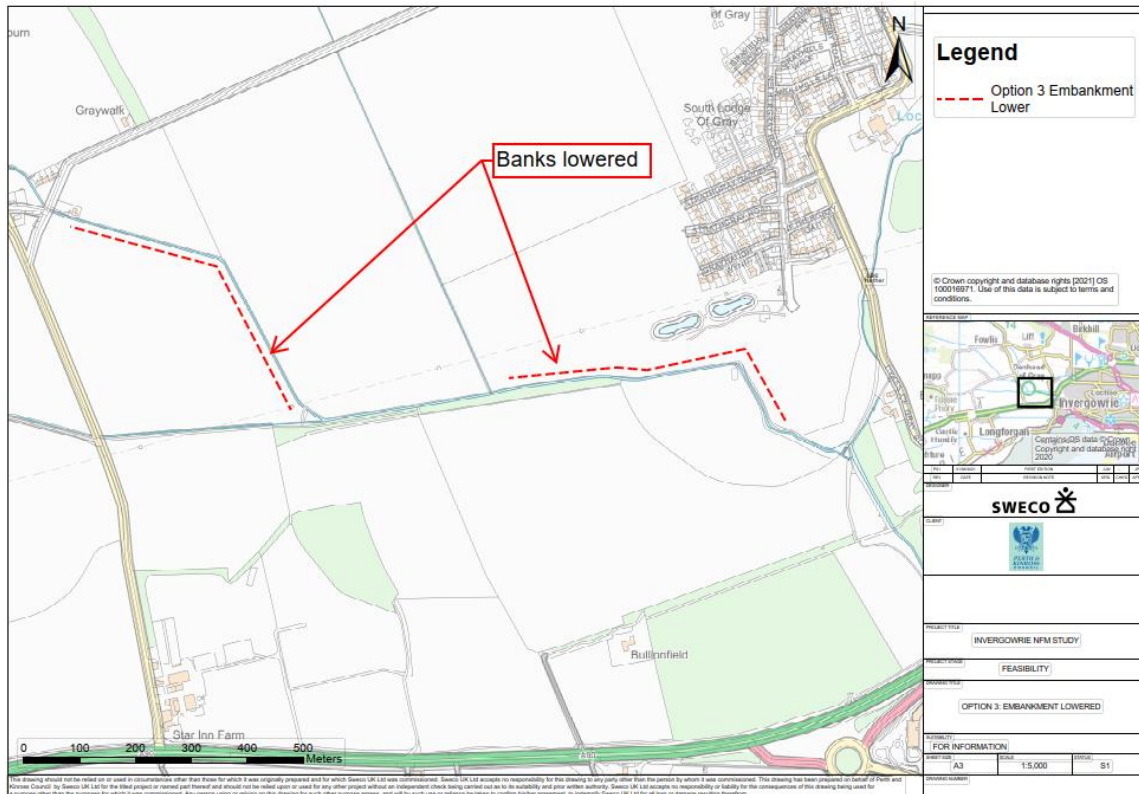
<b>Option 2</b>	Catchment wide measures including reforestation, distributed surface water storage, and sustainable land management practices.
-----------------	--



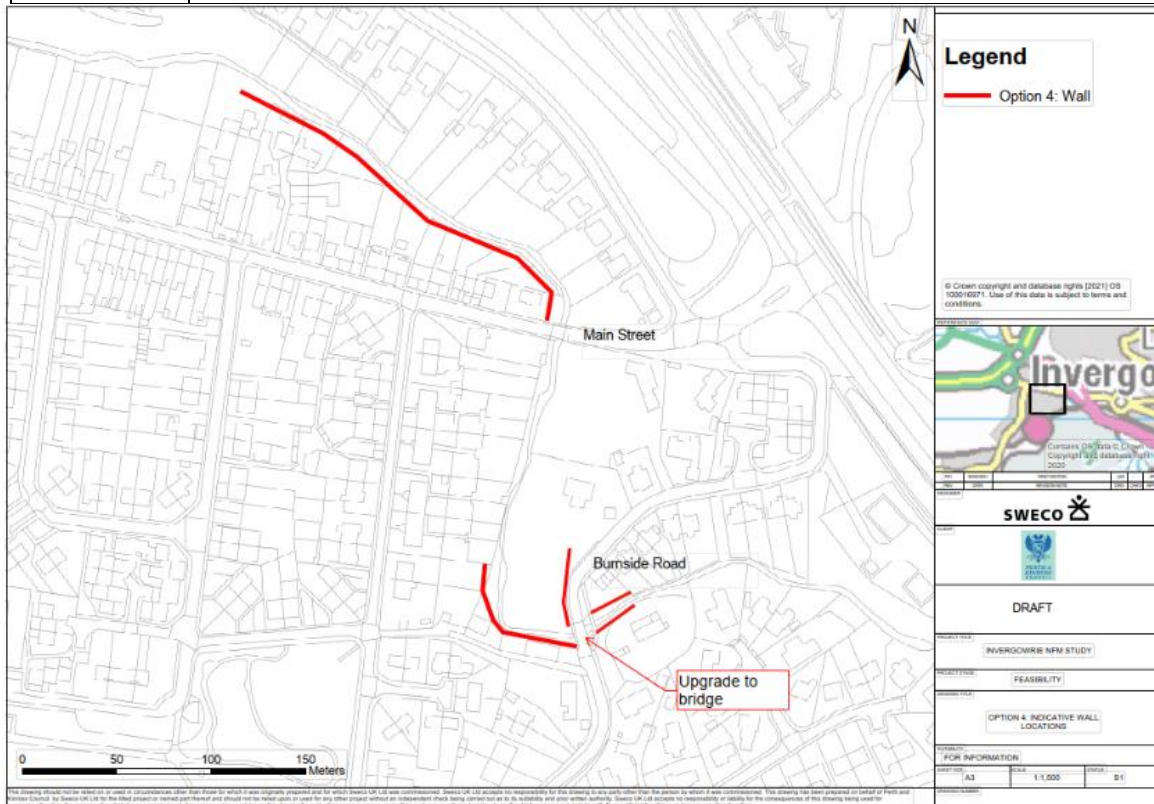
### Option 3

Structural measures including de-culverting sections of the Fowlis Burn, incorporating a bypass channel close to Fowlis, and removing embankments to reconnect the Fowlis Burn with its floodplain.





## Option 4 Direct flood defences within Invergowie including walls upstream and downstream of Main Street and Burnside Road.



<b>Option 5</b>	Non-structural measures such as more frequent and extensive inspection visits of structures in the upper catchment; the promotion of sustainable land management (such as enhanced flood water storage or woodland planting), property buy-back, awareness raising, and updates to local planning policies to consider flood plain management.
-----------------	--

(No Drawing).