



Improving Lives Together
Ambition | Compassion | Integrity



Additional Support Staffing Standard

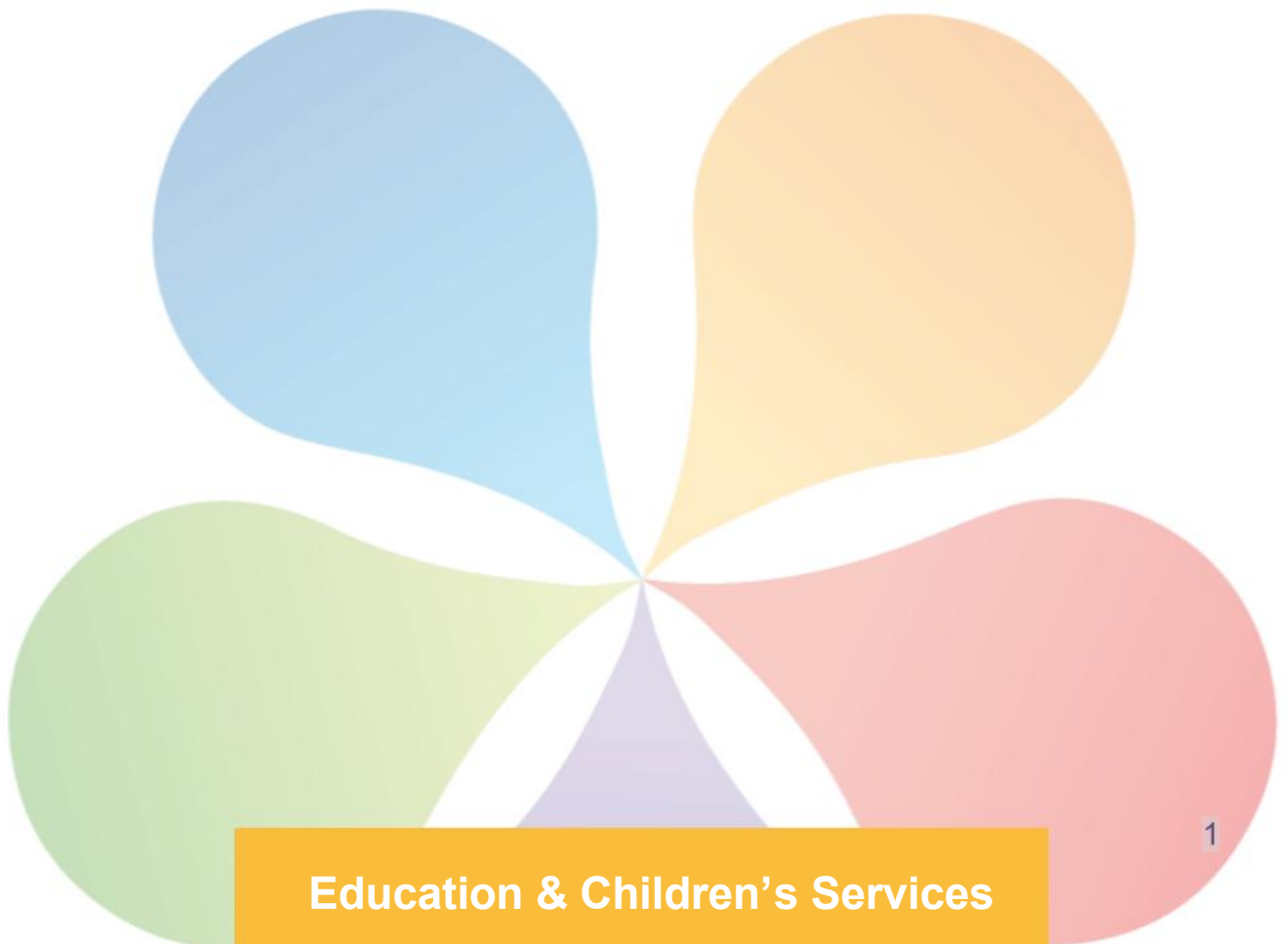
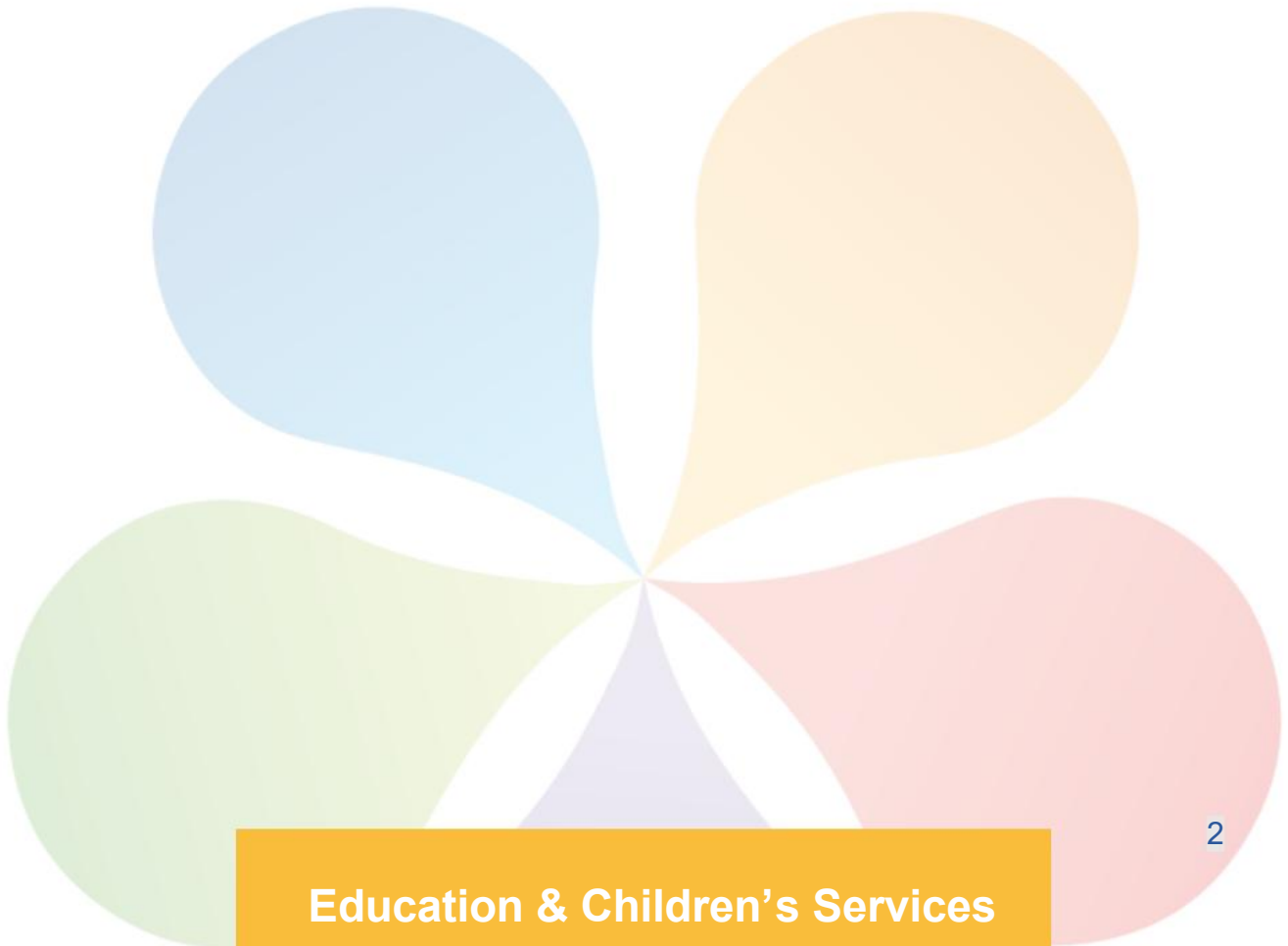




Table of Contents

Additional Support Needs – Enhanced Allocation	3
Primary Support for Learning Teaching	3
Secondary Support for Learning Teaching	3
Pupils Support Assistants – Core Allocation	3
Pupils Support Assistants – Exceptional Need	4
Additional Support Needs – Intensive Support Provision (ISP)	4
ISP Principal Teacher	4
ISP Primary Teaching Staffing Standard	4
ISP Secondary Teaching Staffing Standard	4
ISP Pupil Support Assistant Staffing Standard	5
Worked Example	5





Additional Support Needs – Enhanced Allocation

Primary Support for Learning Teaching

Primary Support for Learning teachers are funded centrally and are not part of the devolved school management scheme.

Secondary Support for Learning Teaching

Available budgeted fte is allocated proportionally across Secondary schools based on:

- 40% Pupil Roll
- 60% Clothing and Footwear Grant Pupils of feeder primaries

Allocations will be reviewed on a 3 yearly basis

Pupils Support Assistants – Core Allocation

Available budgeted fte is allocated proportionally across Primary and Secondary schools based on:

- 40% Pupil Roll
- 60% Clothing and Footwear Grant Pupils of feeder primaries

Allocations will be reviewed on a 3 yearly basis.

Primary based Pupils Support Assistants' maximum contract is 27.5 hours.

Secondary based Pupil Support Assistants maximum contract is 30 hours.



Pupils Support Assistants – Exceptional Need

In exceptional circumstances a school may also receive an additional allocation to the core allocation. This may be put in place if a child or children's need is not able to be met through the core allocation. Exceptional need allocations may be considered for schools with a small pupil roll or low levels of deprivation where children and young people have at least 1 of the following:

- An ASD diagnosis that impacts significantly on participation in learning or is currently under assessment
- Complex health and/or learning needs
- Significant Social and Emotional Behavioural Needs

Where exceptional need arises during the year, this should be discussed with the Inclusion QIO for the school.

Additional Support Needs – Intensive Support Provision (ISP)

ISP Principal Teacher

Each ISP will have a teaching Principal Teacher (PT) who will have 0.1 fte of management time for each ISP class.

ISP Primary Teaching Staffing Standard

1.11fte Teaching will be allocated per each class of 8 pupils. The PT teaching commitment will be included in this allocation. The class will not exceed the equivalent of 10 full-time pupils per teacher.

ISP Secondary Teaching Staffing Standard

1.0fte Teaching will be allocated per each class of 8 pupils. Reduced class contact time is included in the Secondary teaching allocations as ISP pupils are included in the overall secondary pupil roll. The PT teaching commitment will be included in this allocation. The class will not exceed the equivalent of 10 full-time pupils per teacher.



ISP Pupil Support Assistant Staffing Standard

In a Primary setting one 27.5hr Pupil Support Assistant (PSA) will be allocated per each class equivalent of 8 pupils. In a Secondary setting one 30hr PSA will be allocated per each class equivalent of 8 pupils. If the overall number of children in the ISP exceeds the equivalent of 8 full-time pupils per class, then additional PSA hours may be allocated based on needs up to a maximum of an additional 27.5/30 hrs depending on setting.

Worked Example

Secondary Integrated Support Provision with 3 classes with a maximum of 8 full-time equivalent children in each class.

PT management time	0.30 (3 classes x 0.10 fte)
Teaching fte	3.00 fte
Total Teaching fte	3.30 fte
PSA hours	3 x 30hr