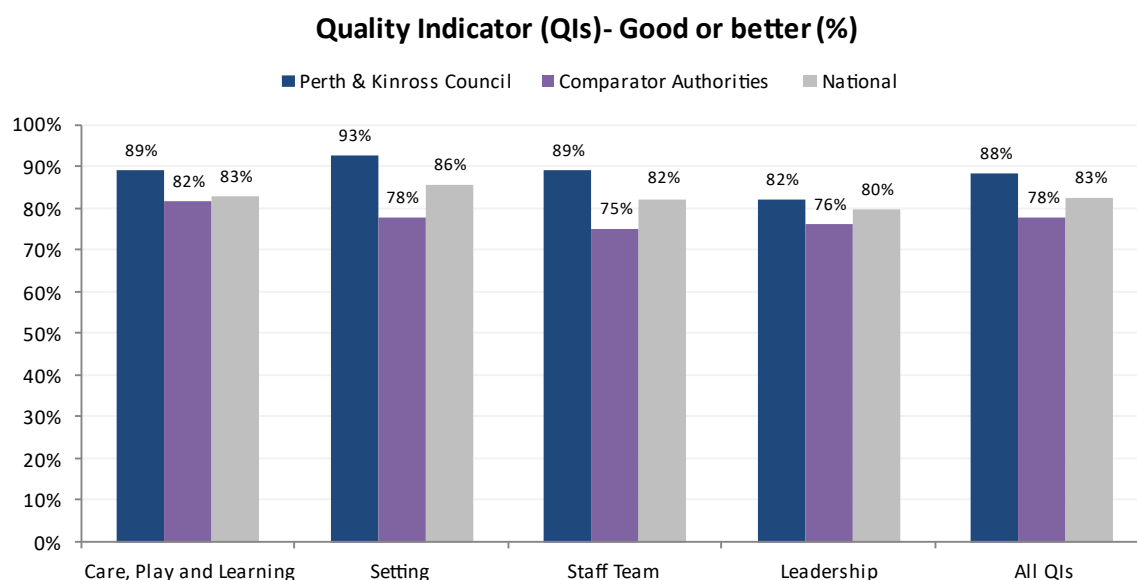


Summary of performance¹, services providing day care of children inspected by the Care Inspectorate^{2,3}

Table A1: Summary of performance – 2023/24 (to date)⁴

Number of services inspected = 28					
Previous Themes	Care and Support	Environment	Staffing	Management and Leadership	
Quality Themes	Care, Play and Learning	Setting	Staff Team	Leadership	Total
Excellent	0	0	0	0	0 0%
Very Good	10	14	19	13	56 50%
Good	15	12	6	10	43 38%
Adequate	2	2	3	4	11 10%
Weak	1	0	0	0	1 1%
Unsatisfactory	0	0	0	1	1 1%
Total	28	28	28	28	112

CHART A1: Performance 2023/24: PKC, Comparator Authorities and Scotland



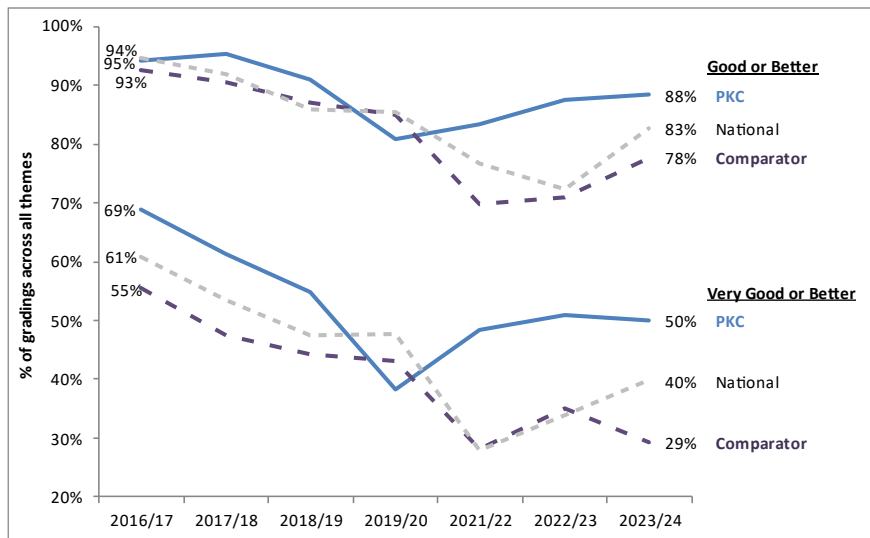
¹ Note that rounding of percentage figures may mean totals reported elsewhere differ slightly.

² Note that comparator and national proportions include all services for day care of children whereas Perth and Kinross figures only represent local authority and partner provider services (it is not possible to distinguish these in national statistics). It also restates previous gradings when quality themes are not assessed in every inspection.

³ Comparator local authorities are Argyll and Bute, Aberdeenshire, Stirling, Scottish Borders and Highland Council. Comparator and national proportions currently available until January 2024.

⁴ Inspected, published and reported to Learning and Families Executive Sub-Committee

CHART A2: Performance 2016/17 to 2023/24: PKC, Comparator Authorities and Scotland



Commentary:

National and comparator figures show PKC out-performing comparator and national benchmarks at both *Good and Better* and *Very Good or Better* levels.

Note: Vertical axis adjusted to emphasise differences
 * Quality Indicators changed on 01/06/2022 by Care Inspectorate.

CHARTS A3-6: Performance 2016/17 to 2023/24*: PKC

CHART A3

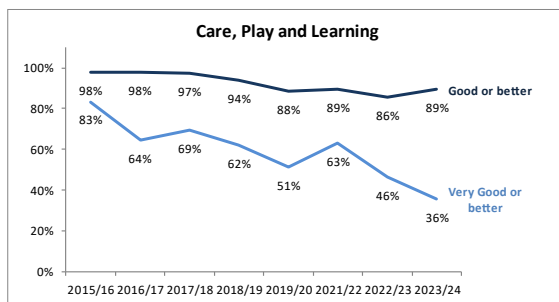


CHART A4

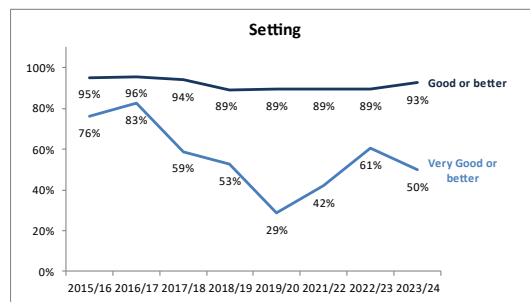


CHART A5

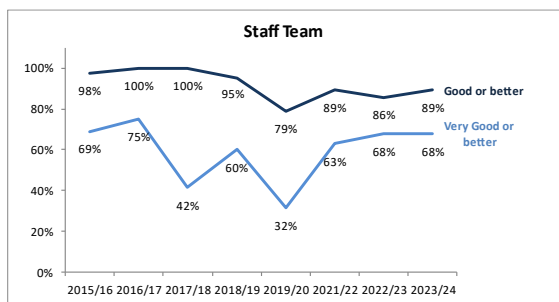
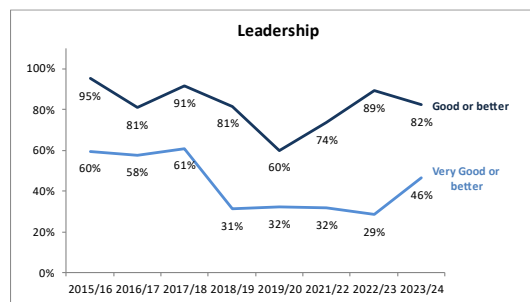


CHART A6



Current Position

The charts above illustrate the aggregated individual results of inspections over several years. Some settings will be inspected more than once during this period, and some Quality Indicators are not covered in every inspection.

The accumulated result of all these inspections is the current position of all Early Learning and Childcare services in Perth & Kinross - shown in the charts below.

These summarise the proportion of settings that currently have a *Good or better* rating, based on the latest inspection for each indicator.

CHART A7: Current Quality Ratings - PKC

