

# PERTH & KINROSS INTEGRATION JOINT BOARD: 26 October 2022

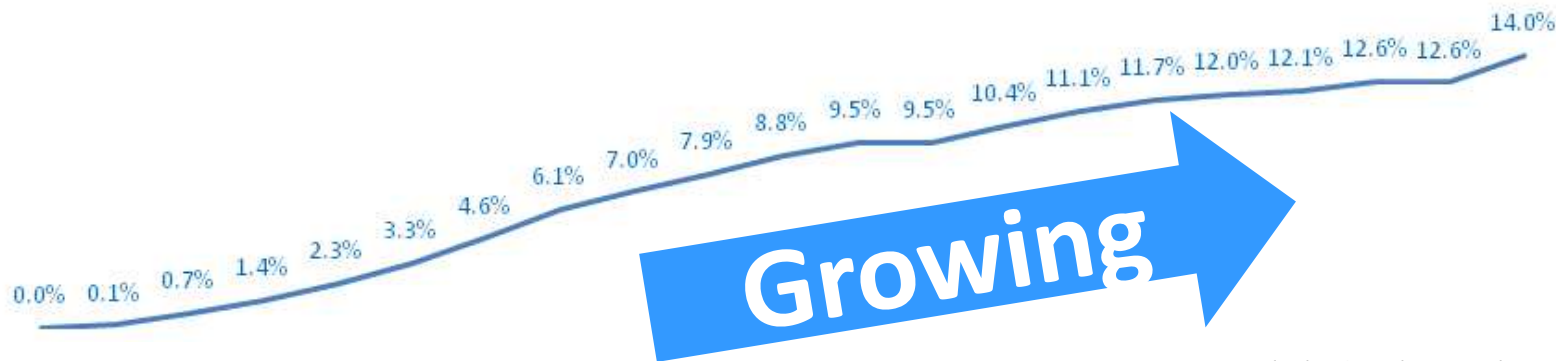
## **DISCHARGE WITHOUT DELAY**

EVELYN DEVINE, HEAD OF HEALTH

	YEAR																				
	2001	2002	2003	2004	2005	2006	2007	2008	2009	2010	2011	2012	2013	2014	2015	2016	2017	2018	2019	2020	2021
AGE GROUP																					
90+	1,024	1,033	1,040	1,067	1,096	1,092	1,031	1,033	1,021	1,140	1,250	1,331	1,400	1,498	1,529	1,603	1,706	1,725	1,802	1,815	1,884
85-89	2,040	1,984	1,939	1,846	1,987	2,141	2,303	2,412	2,557	2,538	2,589	2,688	2,682	2,738	2,825	2,928	3,012	3,054	3,112	3,167	3,218
80-84	3,295	3,574	3,767	4,049	3,970	3,987	4,032	4,027	4,106	4,228	4,369	4,435	4,456	4,544	4,660	4,710	4,752	4,845	5,048	5,124	5,103
75-79	5,252	5,304	5,327	5,333	5,435	5,500	5,541	5,612	5,639	5,801	5,864	5,950	6,038	6,224	6,317	6,299	6,453	6,638	6,697	6,742	7,088
70-74	6,444	6,418	6,458	6,481	6,623	6,629	6,705	6,853	7,058	7,141	7,184	7,250	7,498	7,537	7,659	8,038	8,691	9,023	9,300	9,610	9,721
65-69	7,039	7,106	7,229	7,491	7,571	7,567	7,788	8,035	8,073	8,224	8,584	9,328	9,660		10,266	10,338	9,901	9,914	9,875	9,859	9,984
60-64	7,543	7,772	8,065	8,181	8,426	8,835	9,537	9,990	10,308	10,512	10,597	10,048				10,076	10,241	10,277	10,542	10,613	10,939
55-59	8,686	9,374	9,869	10,207	10,438	10,561	10,117	10,016									10,769	10,954	11,289	11,540	11,986
50-54	10,161	9,729	9,686	9,737	9,745	9,745	9,745	9,745	9,745	9,745	9,745	9,745	9,745	9,745	9,745	9,745	11,972	12,059	12,014	11,797	11,283
45-49	9,457	9,647	9,743	9,958	10,013	10,013	10,013	10,013	10,013	10,013	10,013	10,013	10,013	10,013	10,013	10,013	10,947	10,753	10,320	9,999	9,466
40-44	9,932	10,178	10,427	10,671	11,105	11,210	11,210	11,210	11,210	11,210	11,210	11,210	11,210	11,210	11,210	11,210	9,149	8,785	8,372	8,185	8,214
35-39	10,470	10,476	10,517	10,438	10,070	9,929	9,720	9,411	9,054	8,661	8,289	7,884	7,664	7,670	7,830	8,191	8,478	8,677	8,986	9,103	9,219
30-34	9,007	8,818	8,539	8,268	7,946	7,527	7,220	7,070	7,066	7,319	7,581	7,875	8,086	8,357	8,596	8,571	8,503	8,534	8,400	8,174	8,511
25-29	6,849	6,431	6,211	6,213	6,360	6,654	7,068	7,562	7,890	8,000	8,103	8,079	8,046	7,932	7,766	7,931	8,101	8,235	8,473	8,479	8,396
20-24	6,050	6,138	6,210	6,315	6,671	6,941	7,232	7,505	7,552	7,391	7,487	7,734	7,804	8,197	8,409	8,284	8,029	7,710	7,432	7,474	7,565
15-19	7,929	7,765	7,689	7,304	7,098	7,303	7,554	7,858	8,215	8,633	8,744	8,861	8,767	8,668	8,577	8,450	8,223	8,043	7,941	7,870	7,815
10-14	8,653	8,451	8,402	8,534	8,710	8,616	8,748	8,808	8,655	8,683	8,667	8,427	8,112	7,984	7,913	7,708	7,832	7,954	8,152	8,124	8,419
5-9	7,941	7,940	7,935	7,888	7,892	7,975	7,794	7,602	7,491	7,422	7,226	7,296	7,400	7,587	7,665	7,899	7,976	7,956	7,841	7,869	7,818
0-4	7,178	6,992	6,907	6,919	6,904	6,810	6,909	7,014	7,143	7,244	7,377	7,367	7,239	7,158	7,272	7,181	7,064	6,897	6,799	6,551	6,439

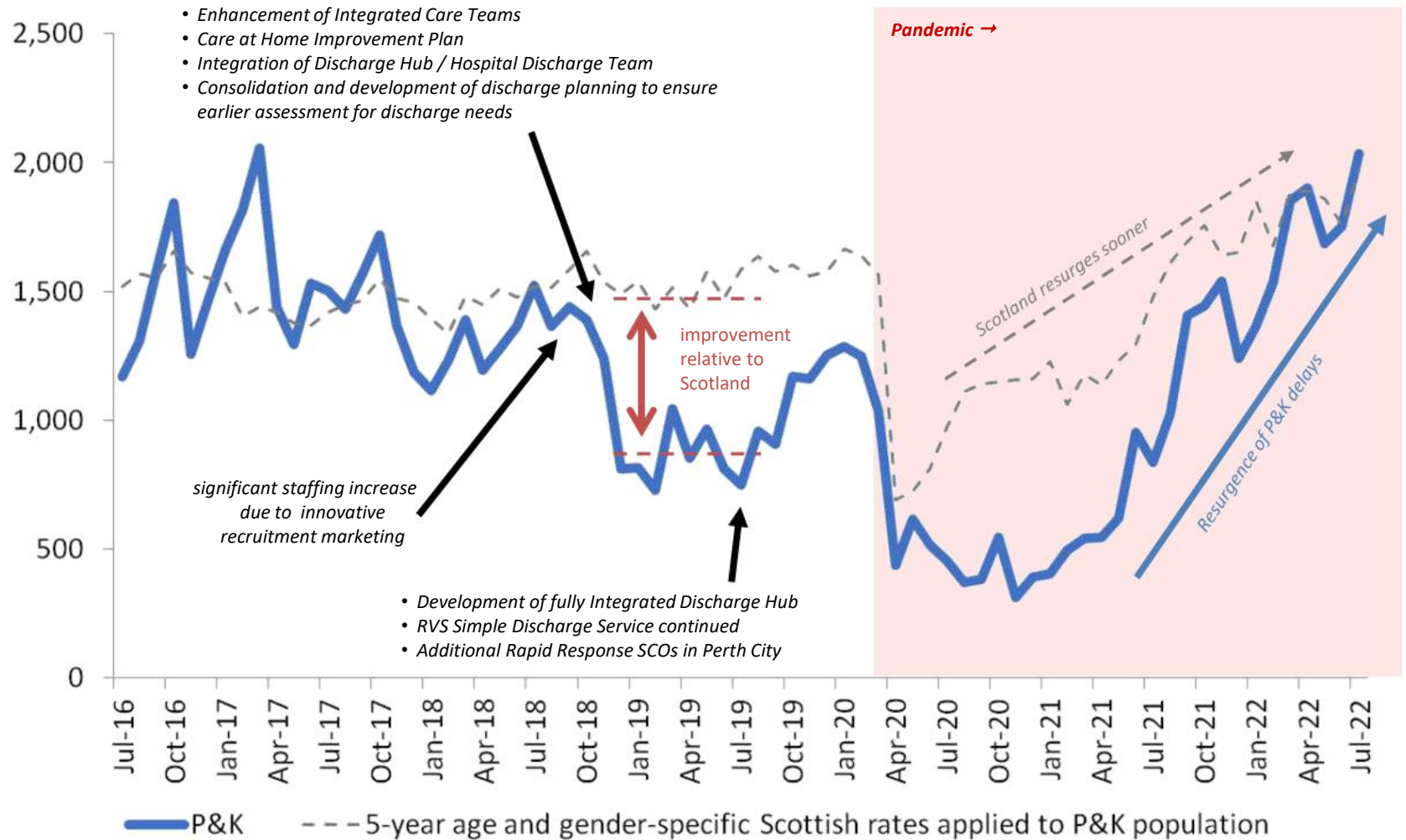
Ageing

POPULATION GROWTH



Source: NRS Scotland – P&K mid-year population estimates

# Delayed Discharges Occupied Bed Days for Adults aged over 18



# Older Peoples Strategy

- Strategic Delivery Plan for Older Peoples Services 2022-2025 – signed off by IJB
- Strategic themes
  - Early Intervention
  - Shifting the Balance of Care
  - Capacity and Flow (including Discharge without Delay Programme)
- Investment of £6.4m into Older Peoples Services
- EMT Approved Winter Resilience Plan
- Reinstated Silver Command Structure oversee DD Trajectory Management
- EMT commissioned Whole System Dashboard to consider pressure points in service delivery

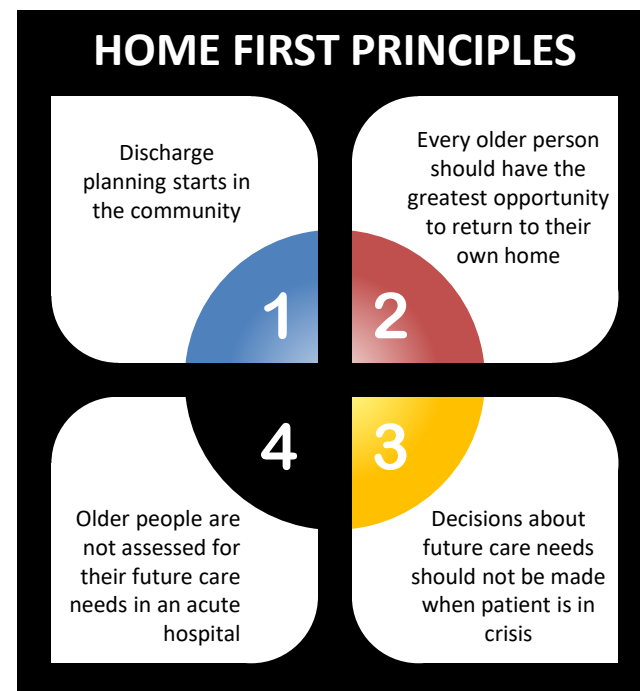
# Discharge without Delay

## Our vision

- *People are supported by a single integrated team, working in the best interest of them, their family, and carers*
- *The right people, delivering the right care, in the right place, at the right time*
- *proactively ensuring unhindered pathways that enable optimal outcomes*
- *the best possible experience across the entire care journey and beyond*

## Workstreams

- Frailty at the Front Door
- Planned date of Discharge
- Integrated Discharge Hub
- Interim Beds



# NEXT STEPS



## **P2P Calls**

Ensuring we get the right person to the right place, first time  
Adding value to every patient journey



## **Ambulatory Assessment**

Delivering the right care to the right person  
Hospital at Home



## **Acute Frailty**

Delivering the right care to the right person (e.g. at the front door)  
Preventing deconditioning & prolonged admissions



## **Alternative Pathways – capacity and flow**

Clinical Forum to ensure maximised opportunities for interface working  
Urgent Care home visiting



## **Sustainable workforce**

Service delivery with kindness and resilience  
Improving workforce recruitment and retention