

Community Greenspace Partnership Projects

Pitlochry Recreation Ground

As one of PKC's premier parks it was essential to develop a high quality recreational facility for the town – to deliver an exciting play experience and revitalise the park and terraces. With its beautiful natural setting, this is an important destination for visitors and residents alike and both Community Greenspace and Pitlochry User Groups (PUGs) were committed to creating a space befitting a town the size of Pitlochry, particularly with its high level of tourists. The planning process was extensive to ensure that not only the physical requirements of the site were considered but an inclusive approach to identify and involve a wide range of stakeholder needs was undertaken – the community have been involved through all stages of project planning and very much involved with raising extra funds to ensure the project could be realised. PUGs was established and their aims and ambitions reach far beyond this particular project.

Community Greenspace consulted regularly with all user groups of the site – Parent Council, parents, school, Community Council, Highland Games, Highland Nights, Football Club and dog walkers. Stakeholder needs were addressed by involving them every step of the way with Community Greenspace officers attending monthly user group meetings and giving regular updates. We involved the school children with the design, and asked them to create a colourful letterhead for the PUGS group.

By addressing these needs, Community Greenspace has:

- Worked in partnership with the community to deliver an extremely successful project to a very high standard
- Developed community cohesion –PUGS are very well supported in the town with people approaching them with ideas, supporting their fundraising events and local businesses donating money to the cause.
- Developed community pride in their locality and in the work they have achieved
- Strengthened relationships between Community Greenspace and the community

PUGS added significant financial value to this project as well by contributing £15,000 to the £103,000 playpark upgrade and an incredible £87,000 to the £187,000 terraces upgrade project.



By consulting, informing and working directly with the community something incredible has evolved. The Pitlochry community are truly involved with their greenspace facilities and by working collaboratively we are jointly delivering an enhanced public space for all to enjoy. The facilities were used to host a major Football Festival and Gala Day in June this year.

BREADALEANE & STRATHTAY YOUTH FC
HIGHLAND PERTHSHIRE FOOTBALL

FESTIVAL

FUN 4S (2011S), SUPER 5S (2010S),
7 A-SIDES (2009S & 2008S)

EDRADOUR BS YOUTH ATHOL PALACE HOTEL

PITLOCHRY PAVILION USERS GROUP AND BSYFC WELCOME YOU
TO FABULOUS HIGHLAND PERTHSHIRE FOR A FUN DAY OF
FOOTBALL AND GALA ACTIVITIES, STALLS AND FUNDRAISING.

SAT 23RD JUNE 10AM-4PM

PITLOCHRY RECREATION GROUND

In line with SYFA small sided game guidelines BSYFC will be running:
 4 a-sides for 2011s (10 min games) 6 players max per team &
 5 a-sides for 2010s (12min games) 8 players max per team, from 10am-1pm
 7 a-sides for 2009s & 2008s (15min games) 10 players max per team, 1pm-4pm
 All on a non-competitive basis.
 Each team must complete a registration form for the festival [CLICK HERE](#)
 Entry fee £20 introductory offer, via BACS, SYFA permit (E10) also required.
 Spaces are limited - acceptance will be given on a first come first served basis. (max 2
 teams per club, per age group)
 Each player will receive a medal. Fair play trophies will be awarded for each age group.
 CONTACT main: mcadam@hotmail.co.uk or 07966581172

**& GALA
DAY**

**INFLATABLES, STALLS,
CATERING, CLOWN,
FACEPAINTING, BALLOONS
& MUCH MORE!**

There is still a tremendous buzz in the town about all the improvements and partnership working. This model of partnership working clearly demonstrates how the relationship between the Council and community can very effectively deliver excellent services which would not be achievable otherwise. This is a great example of what can be achieved by working together to ensure success, now and into the future.

Paths Group Support

Community Greenspace work with local groups to maintain, improve and promote our shared open spaces for all to enjoy. A key part of this is to keep our path networks in good shape.

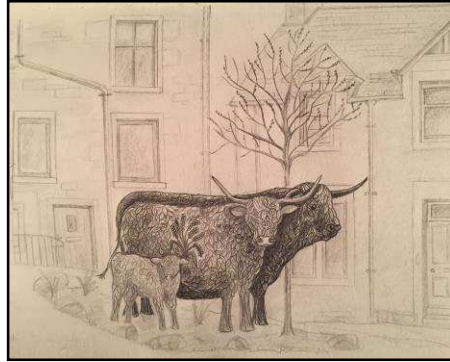
PKC can no longer maintain the path network to the standards we would like, with maintenance further complicated as many of these paths are on private ground. We recognise the need to work together with communities to do this. There is a growing network of volunteer paths groups across Perth and Kinross who, with our support, are engaged in fundraising and carrying out practical work to keep the paths in their local area open.

In recent years, Community Greenspace has actively encouraged the establishment of such paths groups by providing hands on support through our greenspace rangers and coordinators.

Our Path Group Development project promotes effective communication between paths groups and the Council; coordinated through the greenspace rangers who assist groups with planning tasks, lending tools, providing insurance, training and financial support (including grant aid through the Community Environment Challenge Fund) and facilitating negotiations with landowners.

By working closely with our local paths groups, we can better prioritise our paths and greenspaces, allowing us to make greater use of our own resources. The groups can assist us by maintaining paths that we cannot and accessing funding that is not available to the Council, allowing them to take forward larger projects that we don't have the capacity to undertake.





Take A Pride in Perth and Kinross

Working with the Take A Pride in Perth and Kinross Association, the activity of bloom groups reaches far beyond baskets and containers! While significantly enhancing our environment and all the health and well-being benefits, there is also a significant financial benefit to the Council. Some examples are:

Coupar Burn, completed Spring 2017 – £30k removal of invasive plants and non-native trees, creation of path and seating area.

Aberfeldy Lower Birks, completed Winter 2018 – £73k enhancement of entrance to Lower Birks from town centre with scrub clearance, creation of accessible path, picnic area and sculpture. Although PKC will continue to cut the grass group responsible for on-going maintenance. Phase 2 is about to go live with the creation of a reflections garden as a WW1 project (£15k).

Brickhall Community Garden, Bridge of Earn, completed Summer 2018 - £40k – creation of community garden with drystone walling, new planting and renewal of hedging. The group will be responsible for all maintenance including grass cutting.

Other new projects for 2018/19 include:

Pitlochry Wildlife Garden, Auchterarder Garries Corner (creation of community garden to give the village a focal centre), Kinnesswood Benarty View – clearing scrub on recently adopted developer land to create a community garden to make the most of the spectacular views over Loch Leven, Blairgowrie Coronation Corner taking on the site under Licence to Occupy, Alyth Burnside enhancements and Burrell Square, Crieff.

Burrell Square, Crieff

This area of grass and traditional annual bedding will be completely transformed this summer (2018) by community group, Crieff in Leaf's environmental project. The two large annuals beds will be replaced by herbaceous planting and an iron sculpture of a family of "Leafy Coos" to reflect the Drover's heritage of Crieff will be installed. PKC will continue to cut the grass but again under Licence to Occupy, the community will undertake all the maintenance and care of the new herbaceous beds. This gives a significant saving to PKC with the withdrawal of the



maintenance of the beds and the supply of bedding plants each year. This is calculated at £5066 for the maintenance and supply of plants recurring annually.

St Fillans Community Play

Area

This project developed by the St Fillans Community Trust with support from Community Greenspace aims to provide a themed play area within St Fillans which is currently devoid of play equipment. On a wider scale, the project will create an attraction for family day visitors whose number will increase once the new cycleway is completed on the disused railway line between Lochearnhead and St Fillans. The Community Trust have successfully fundraised to enable them to deliver this ambitious project with LEADER funding and a grant from PKC Community Environment Challenge Fund together with a contribution of £30,000 from Community Greenspace. We have worked closely with the group and agreed the specification and design of the equipment and will undertake the maintenance of a defined area within the playpark, with the Community Trust maintaining (and insuring) the equipment outside the area PKC is responsible for. The concept for this play area combines conventional apparatus with a collection of landscape and artistic features based on the theme of "Scottish Beasties" and is imaginative, innovative and adventurous. This project will be under construction in the Autumn of 2018.

Other Project Images

Blackford Play Park Upgrade



Before



After

North Muirton Play Park Upgrade



Before



After



After

MacRosty All Abilities Play Area

