

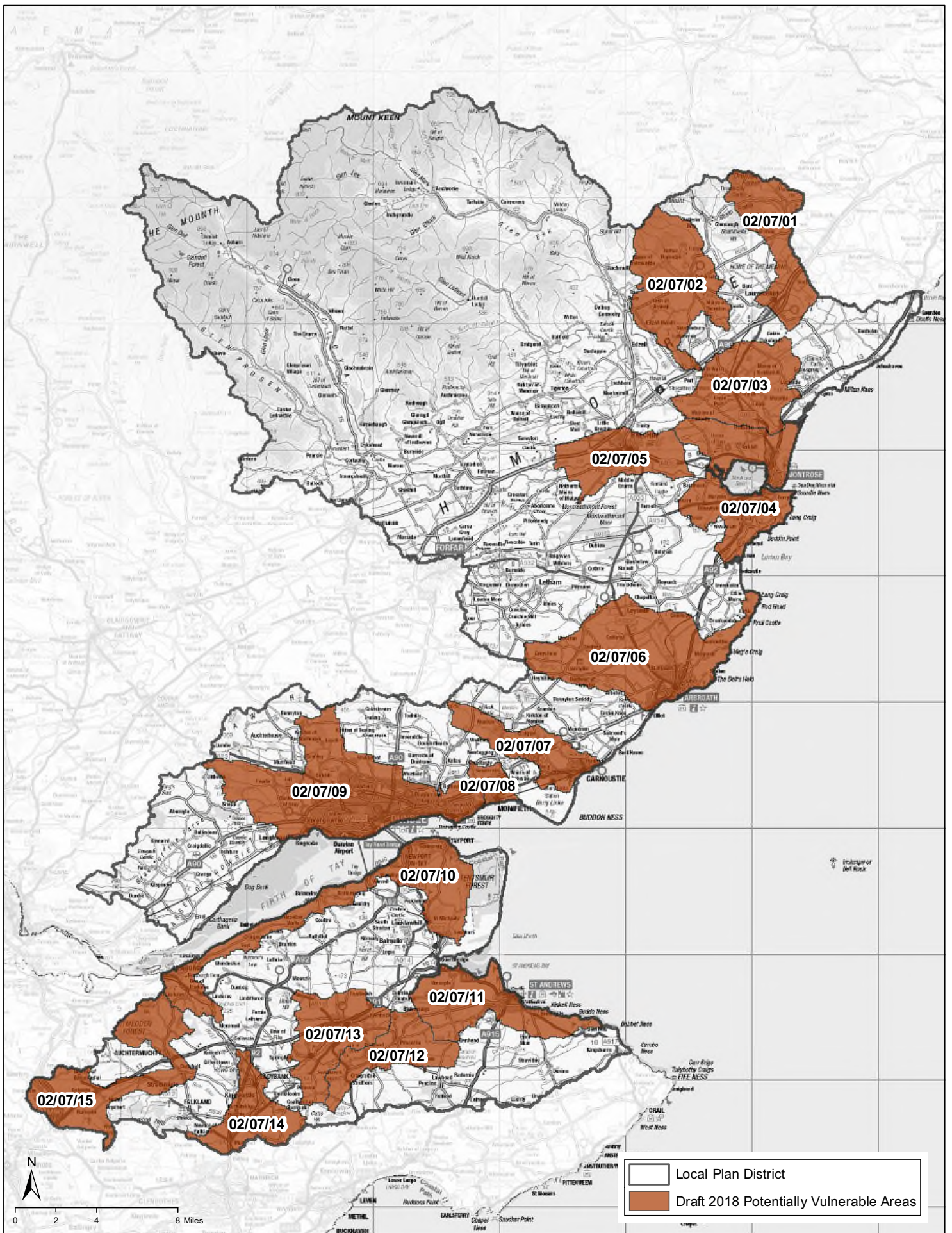
© 2018 Scottish Environment Protection Agency.  
 Some features of this information are based on digital spatial data licenced from the Centre for Ecology and Hydrology, © NERC (CEH). This map is reproduced from Ordnance Survey material with the permission of Ordnance Survey on behalf of the Controller of Her Majesty's Stationery Office © Crown Copyright. Any unauthorised reproduction infringes Crown copyright and may lead to prosecution or civil proceedings. SEPA lic. no. 100016991 (2018).

Produced: 13/09/2018

## PVAs within LPD 8: Tay







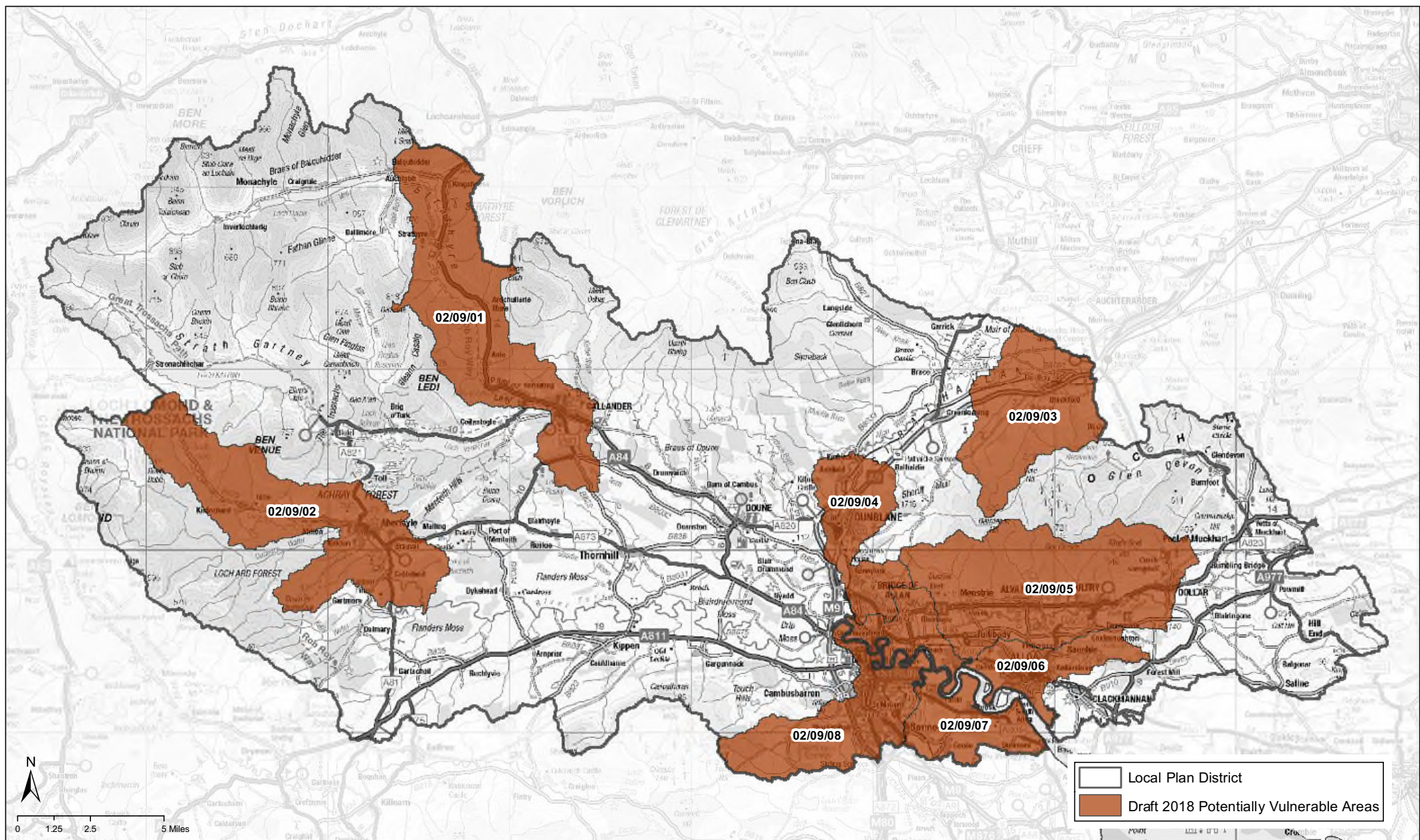
© 2018 Scottish Environment Protection Agency.  
 Some features of this information are based on digital spatial data licenced from the Centre for Ecology and Hydrology, © NERC (CEH). This map is reproduced from Ordnance Survey material with the permission of Ordnance Survey on behalf of the Controller of Her Majesty's Stationery Office © Crown Copyright. Any unauthorised reproduction infringes Crown copyright and may lead to prosecution or civil proceedings. SEPA lic. no. 100016991 (2018).

Produced: 13/09/2018

## PVAs in LPD 7:

# Tay Estuary and Montrose Basin



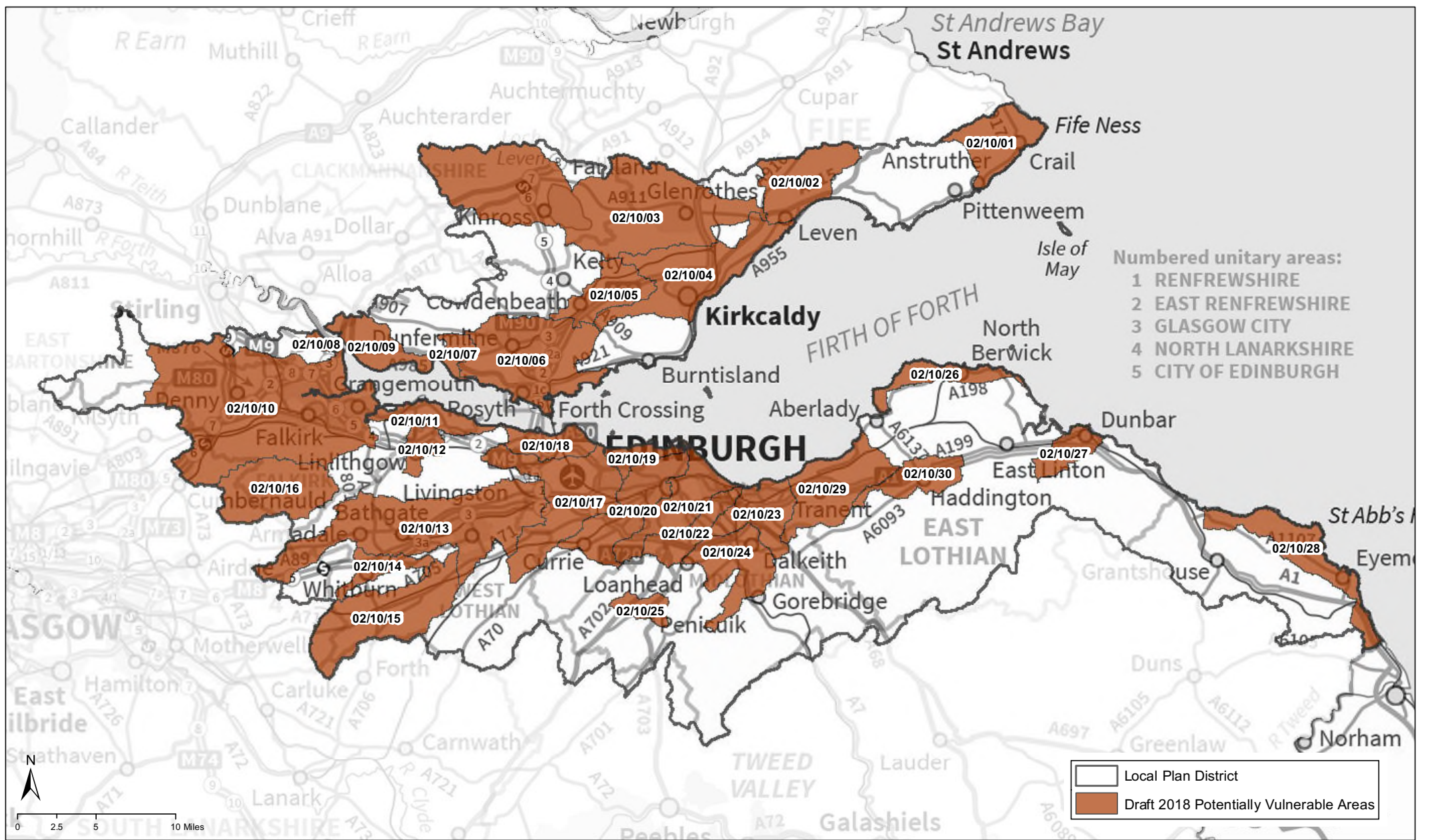


© 2018 Scottish Environment Protection Agency.  
 Some features of this information are based on digital spatial data licenced from the Centre for Ecology and Hydrology, © NERC (CEH). This map is reproduced from Ordnance Survey material with the permission of Ordnance Survey on behalf of the Controller of Her Majesty's Stationery Office © Crown Copyright. Any unauthorised reproduction infringes Crown copyright and may lead to prosecution or civil proceedings. SEPA lic. no. 100016991 (2018).

Produced: 13/09/2018

## PVAs within LPD 9: Forth





© 2018 Scottish Environment Protection Agency.  
 Some features of this information are based on digital spatial data licenced from the Centre for Ecology and Hydrology, © NERC (CEH). This map is reproduced from Ordnance Survey material with the permission of Ordnance Survey on behalf of the Controller of Her Majesty's Stationery Office © Crown Copyright. Any unauthorised reproduction infringes Crown copyright and may lead to prosecution or civil proceedings. SEPA lic. no. 100016991 (2018).

Produced: 13/09/2018

## PVAs within LPD 10: Forth Estuary