



# Remobilisation Plan: Mid Year Update (RMP4)

September 2021

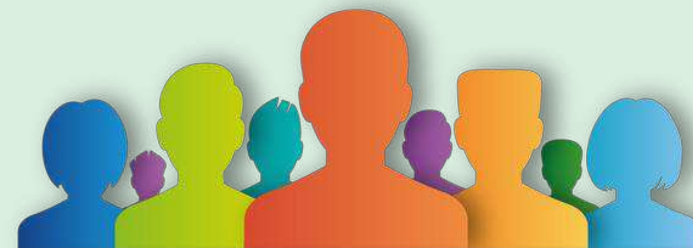
# BACKGROUND

## APRIL 2020

Mobilisation Plan 2020–21 Phase 1  
April 2020 – August 2020

## FEBRUARY 2021

Remobilisation Plan 2021–22 Phase 3  
April 2021 – March 2022



Perth and Kinross  
Health and Social  
Care Partnership

Supporting  
healthy and  
independent  
lives

## JULY 2020

Remobilisation Plan 2020–21 Phase 2  
August 2020 – March 2021

## SEPTEMBER 2021

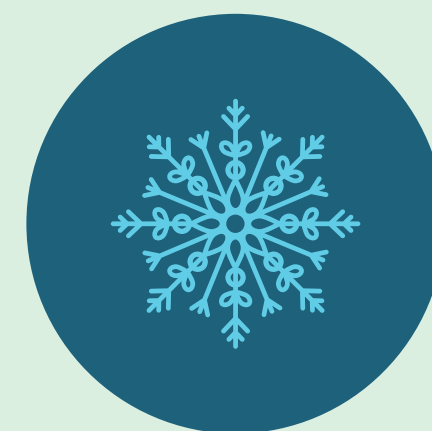
Remobilisation Plan 2021–22 Phase 4  
April 2021 – March 2022 (Update)

## SEPTEMBER 2021

- Provides a full update on all existing commitments.
- Additional priorities added since April 2021 including as below:



Contingency Plans for safe delivery of services across Mental Health Services & Medicine for the Elderly Services and actions required to respond to workforce and bed pressures in Psychiatry of Old Age Services.



Winter Planning (including Vaccination Services) – No separate winter plan is being required by the SG with these now being incorporated into RMP4.



Premises Planning led by NHS Tayside and Perth & Kinross Council to resolve urgent accommodation pressures.



**Perth and Kinross  
Health and Social  
Care Partnership**

Supporting  
healthy and  
independent  
lives

# PERFORMANCE

## REPORTING CYCLE

Performance cycle approved  
by the IJB in 2021

## MID YEAR REPORT

December 2021 IJB

## STRATEGIC PLAN

Continued progress on Strategic  
Objectives

## 3 YEAR STRATEGIC DELIVERY PLAN

Older People  
Mental Health  
Drug and Alcohol  
Learning Disabilities  
Primary Care

## OTHER MEASURES

Patient & Service User Feedback





# FINANCE

- 2021/22 Financial Projections continue to be updated
- Expectation that COVID costs will be fully funded
- Audit & Performance Committee continue to provide financial scrutiny

## NEXT STEPS

- Development of a 3 year Financial Plan



# CORPORATE SUPPORT CHALLENGE

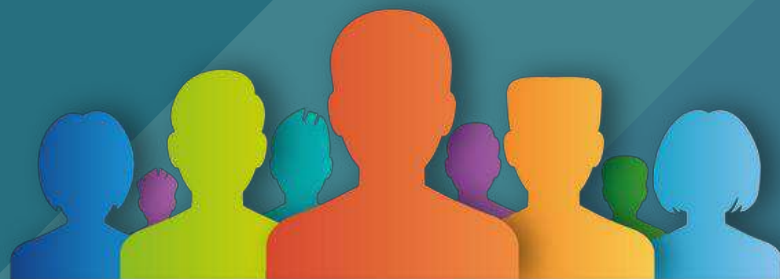
- Across a number of areas
- Reflected in Risk Register
- Rapid Review of Corporate Support
- Internal audit report December 2021





"Safe delivery of care must come first but we have a responsibility to live within our means.

This will be challenging given the unprecedented levels of demand across our services and an emphasis on effectiveness and efficiency, whole systems approaches and best use of resources will be required going forward."



Perth and Kinross  
Health and Social  
Care Partnership

Supporting  
healthy and  
independent  
lives







Perth and Kinross  
Health and Social  
Care Partnership

Supporting  
healthy and  
independent  
lives

